



In the last years Bull has supplied hundreds of handling systems in the field of Scraper Traps in Oil & Gas field, in both manual and electric executions. Usually the handling system concerns Wire Rope Winch plus Jib Crane.



SLAS



BJAS

**A – Manual execution**

A1. manual spark-proof winches are adopted for horizontal travel of trolley, in the following type:

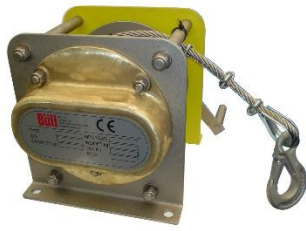
- AMSX spur gear manual winch
- FMSX worm gear manual winch

A2. BJAS manual spark-proof jib cranes

A3. SLAS-SHAS Manual spark-proof chain hoist



## EXPLOSION-PROOF HANDLING SYSTEMS FOR SCRAPER TRAPS



**AMSX**



**FMSX**



**BJAS**



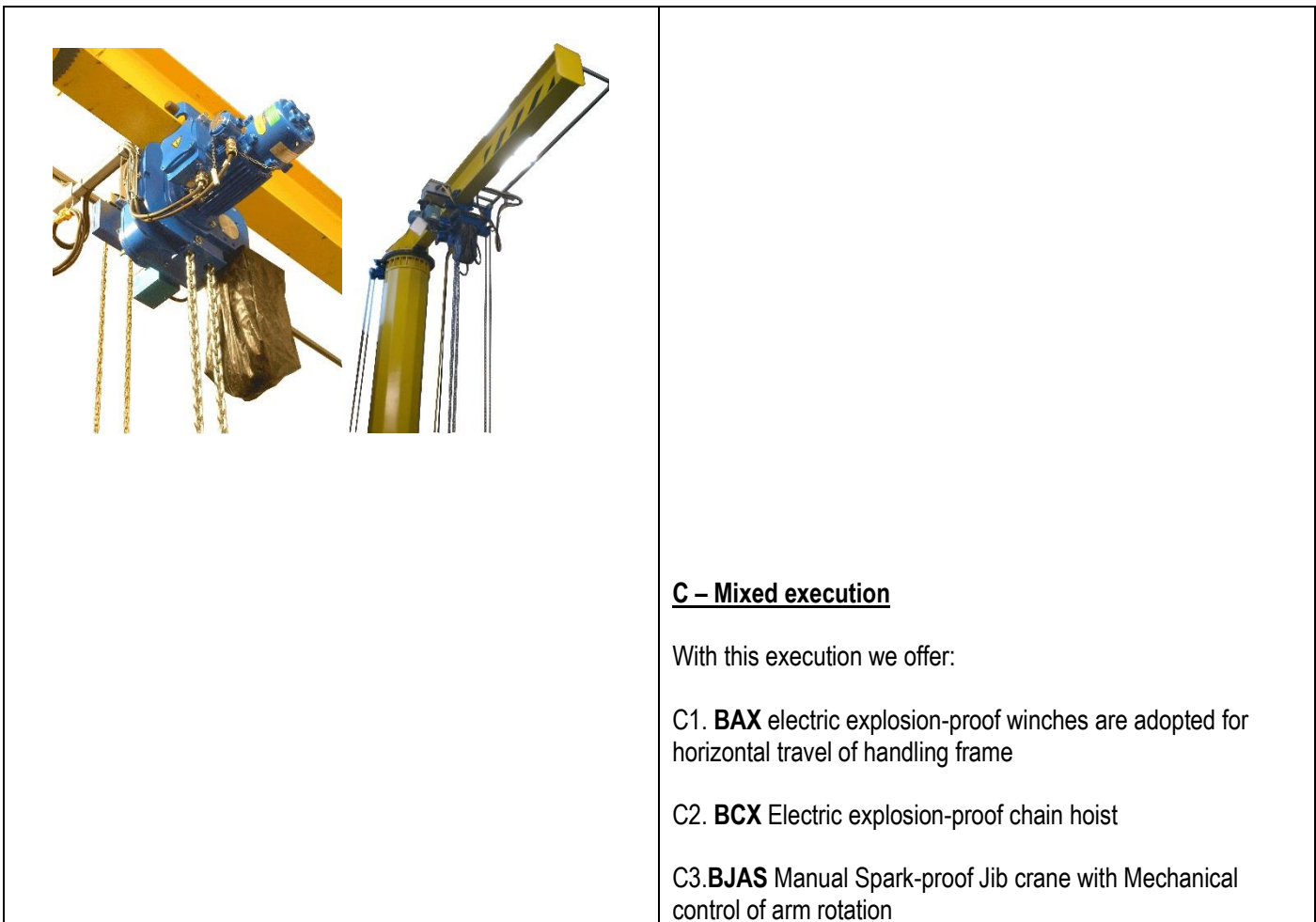
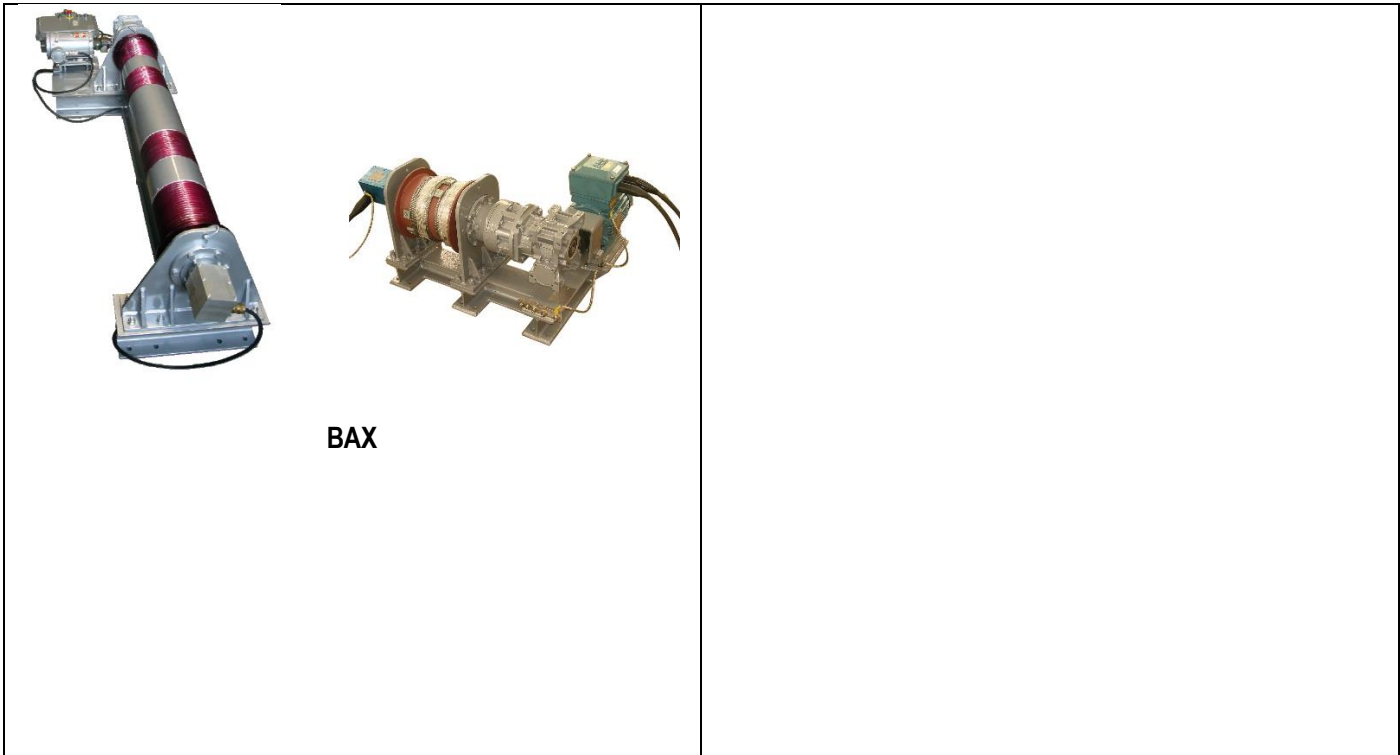
**BJEX**

### **B – Electric execution**

B1. **BAX** electric explosion-proof winches are adopted for horizontal travel of handling frame

B2. **BCX** Electric explosion-proof chain hoist

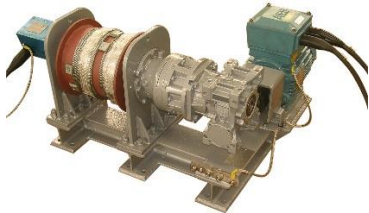
B3. **BJEX** Electric explosion-proof jib crane



EXPLOSION-PROOF HANDLING SYSTEMS FOR SCRAPER TRAPS



**BJAS**



**BAX**